

Choosing a path forward on your remote work journey

A remote work device guide

It's clear that the workplace has changed forever. The future of work will continue to be a mix of in-office and remote work.

That creates great new opportunities, but to make the most of them, you need to be sure people are using the best device for their role or location.

96% want to improve their work environments with intelligent workplace technology.¹

Charting your course forward

Executives

Executives like business leaders or general managers are often booked solid in meetings and collaboration sessions. They need:

- High-quality video and audio
- Consistent user experience
- Privacy: Noise removal and virtual backgrounds



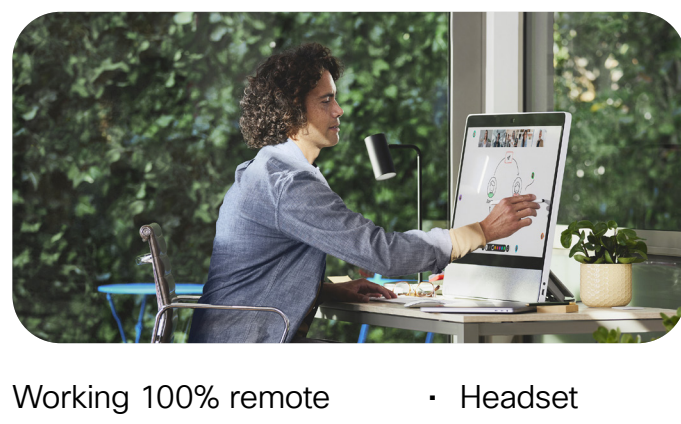
To work on the go and in hybrid environments, executives should consider:

- Headset
- Desk Pro

Creators

Creators such as marketing gurus, engineers, or other creative pros spend much of their time sharing ideas, updating designs, or revising ad copy. They require:

- High-quality video and audio
- Digital whiteboarding and content annotations
- Multipurpose video device that doubles as a primary monitor



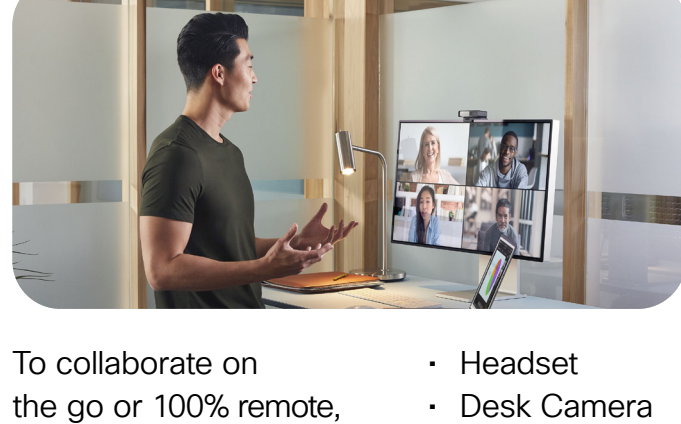
Working 100% remote or hybrid, creators utilize:

- Headset
- Desk
- Desk Pro

Presenters

Presenters including sales professionals and other relationship driven users are all about building a human connection with their audience. They need:

- High-quality video and audio
- Immersive sharing
- Privacy: Noise removal and virtual backgrounds



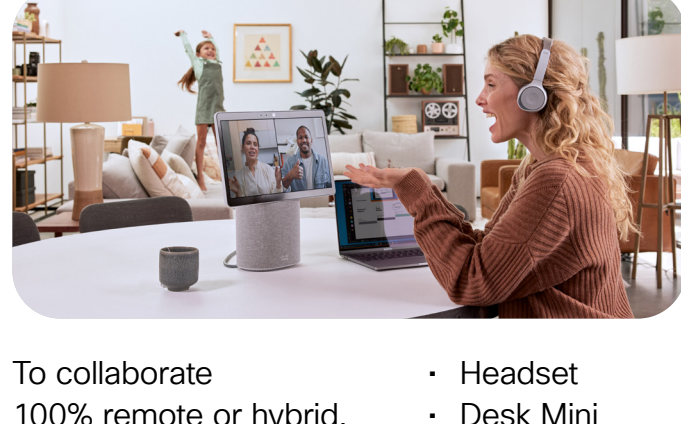
To collaborate on the go or 100% remote, presenters need:

- Headset
- Desk Camera
- Desk

Connectors

Connectors in human resources or other positions are focused on collaborating to bring people together. They require:

- High-quality video and audio
- Consistent user experience
- Privacy: Noise removal and virtual backgrounds



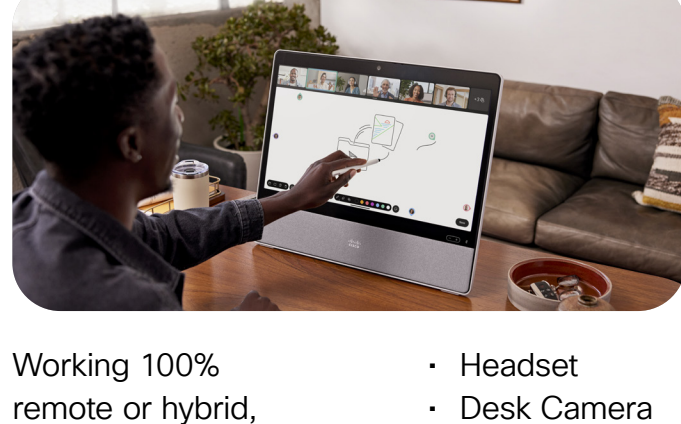
To collaborate 100% remote or hybrid, connectors utilize:

- Headset
- Desk Mini
- Desk

Concentrators

Concentrators are people who work best focusing on singular work and may require specialized resources for finance or operations roles. They utilize:

- Built-in video processing
- Consistent user experience
- Multipurpose video device that doubles as a primary monitor



Working 100% remote or hybrid, concentrators utilize:

- Headset
- Desk Camera
- Desk

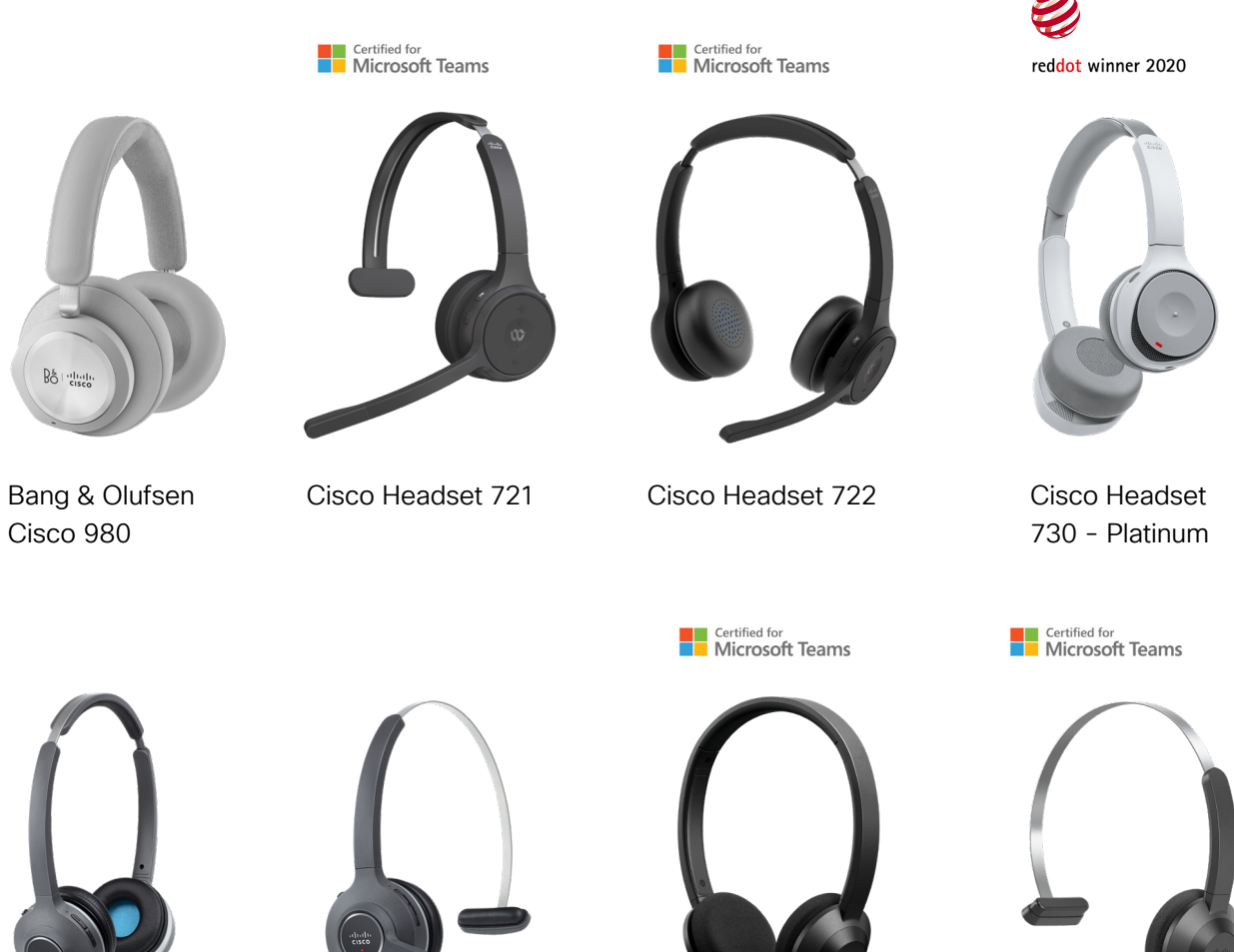
Building your solution, your way

No matter how and where you're working, you can choose from a wide range of hybrid work solutions from the Webex platform to support your work style.

Headsets

Cisco wired and wireless headsets

let you stay productive in any environment



Desktop Devices

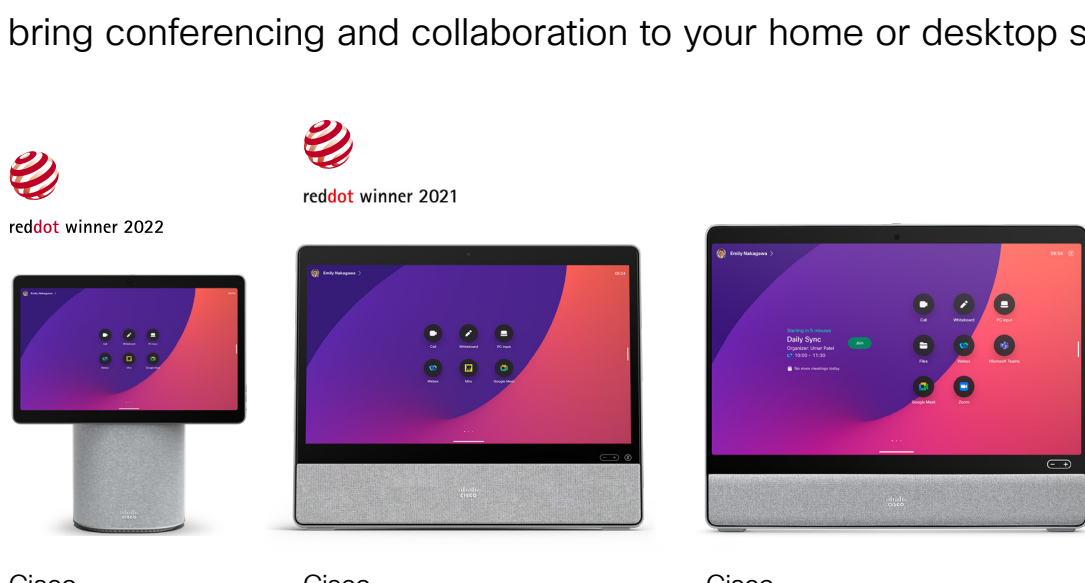
Cisco Desk Camera

delivers high-quality video for heavy video and meeting users



Cisco Desk Devices

bring conferencing and collaboration to your home or desktop space



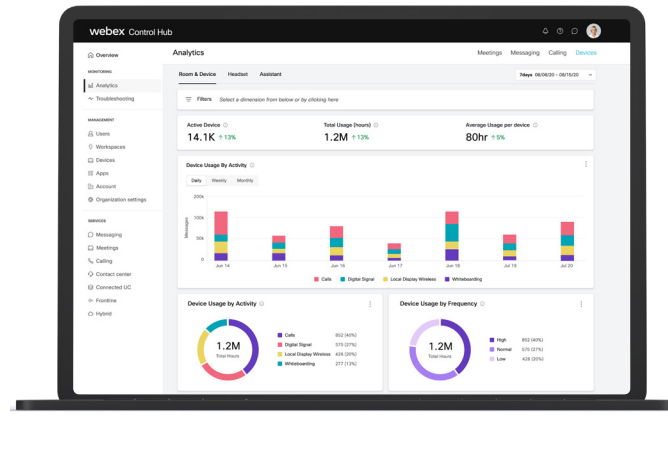
Webex App

is an all-in-one app to call, meet, message, and get work done



Control Hub

provides one dashboard to manage and support your users, spaces, and integrations



Unleash the potential of remote work

Learn more about how you can build your own hybrid workspace:

Visit [Webex.com](https://www.webex.com)

Explore Workspaces

1. Cisco Global Workforce Survey: The Rise of the Hybrid Workplace, October 2020.